



US 231 RELOCATION STUDY

Baker

Recommended Preferred Alternative



US 231 Completed or in Final Design
Proposed Cumberland Road Extension



Preferred Alternative
Line 7- TCAPC Alignment (Modified as of 5-1-02)



Neighborhoods



Celery Bog Nature Area

Surface Water Features

Township Boundaries

Cemeteries

Religious Facilities

State Route

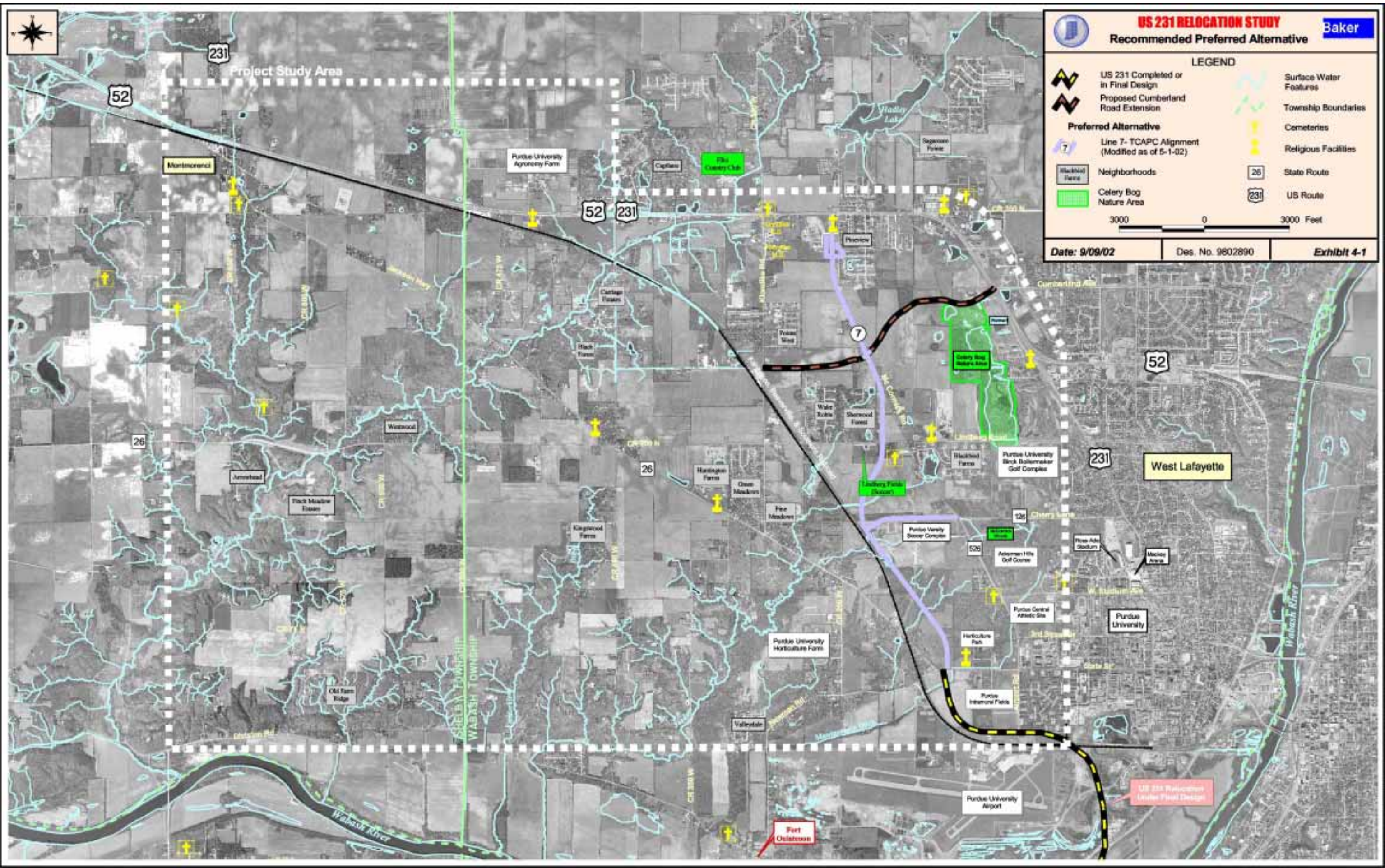
US Route

3000 0 3000 Feet

Date: 9/09/02

Des. No. 9602890

Exhibit 4-1



Project Study Area

52

231

Monticorenci

Purdue University Agronomy Farm

Captain

The Country Club

Segerson Forest

52

231

7

7

Celery Bog Nature Area

7

231

West Lafayette

52

26

Annwood

Black Meadow Tract

Westwood

26

Harlingen Farm

Over Meadows

Pine Meadows

Purdue University Soccer Complex

526

526

Cherry Lane

526

Armen Hill Golf Course

Rice-Ade Stadium

Mackey Arena

231

Purdue University

Purdue Central Athletic Site

526

Herbicide Park

526

Purdue Internal Fields

526

Purdue University Airport

Valleydale

Foot Chestnut

US 231 Relocation Under Final Design

Wabash River

Wabash River

GREENE TOWNSHIP
WABASH TOWNSHIP

Old Farm Edge

526

526

526

526

526

526

526

526

526

526

526

526

526

526

526

526

526

526

526

526

526

526

526

526

526

526

526

526

526

526

526

526

526

526

526

526

526

526

526

526

526

526

526

526

526

526

526

526

526

526

526

526

526

526

526

526

526

526

526

526

526

526

526

526

526

526

526

526

526

526

526

526

526

526

526

526

526

526

526

526

526

526

526

526

526

526

526

526

526

526

526

526

526

526

526

526

526

526

526

526

526

526

526

526

526

526

526

526

526

526

526

526

526

526

526

526

526

526

526

526

526

526

526

526

526

526

526

526

526

526

526

526

526

526

526

526

526

526

526

526

526

526

526

526

526

526

526

526

526

526

526

526

526

526

526

526

526

526

526

526

526

526

526

526

526

526

526

526

526

526

526

526

526

526

526

526

526

526

526

526

526

526

526

526

526

526

526

526

526

526

526

526

526

526

526

526

526

526

526

526

526

526

526

526

526

526

526

526

526

526

526

526

526

526

526

526

526

526

526

526

526

526

526

526

526

526

526

526

526

526

526

526

526

526

526

526

526

526

526

526

526

526

526

526