



# US 231 RELOCATION STUDY

Baker

## Recommended Preferred Alternative



US 231 Completed or in Final Design  
 Proposed Cumberland Road Extension



**Preferred Alternative**  
 Line 7- TCAPC Alignment (Modified as of 5-1-02)



Neighborhoods



Celery Bog Nature Area

Surface Water Features

Township Boundaries

Cemeteries

Religious Facilities

State Route

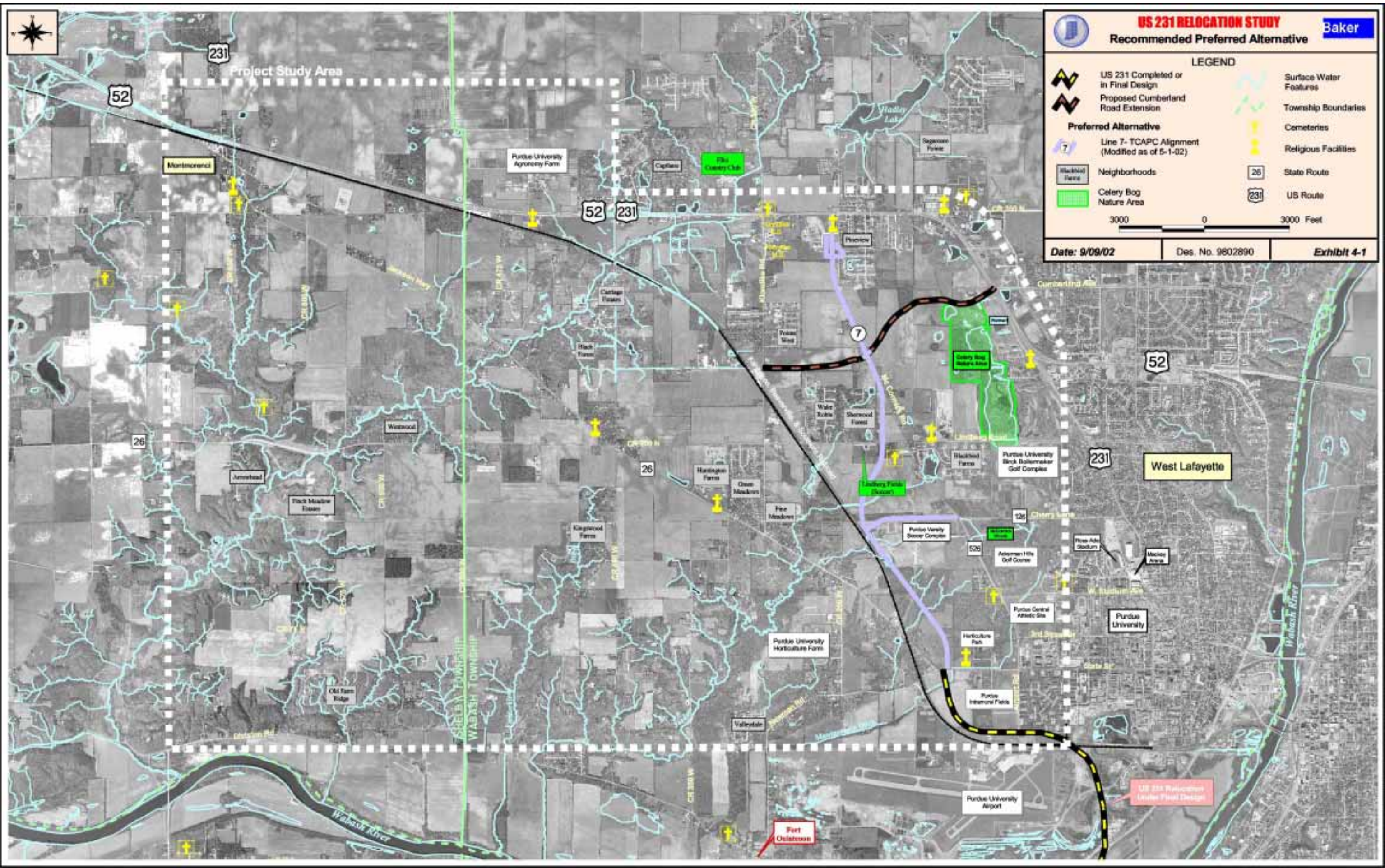
US Route

3000 0 3000 Feet

Date: 9/09/02

Des. No. 9602890

Exhibit 4-1



Foot Chestnut

US 231 Relocation Under Final Design